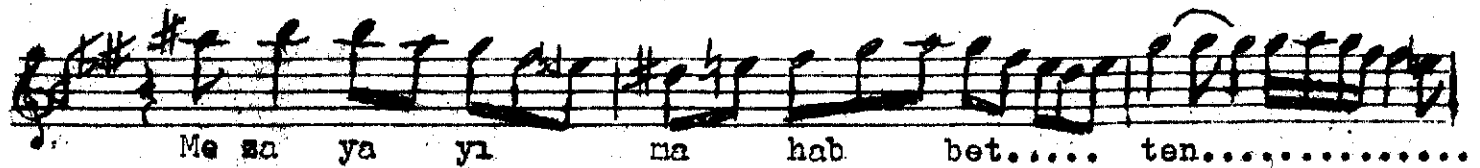
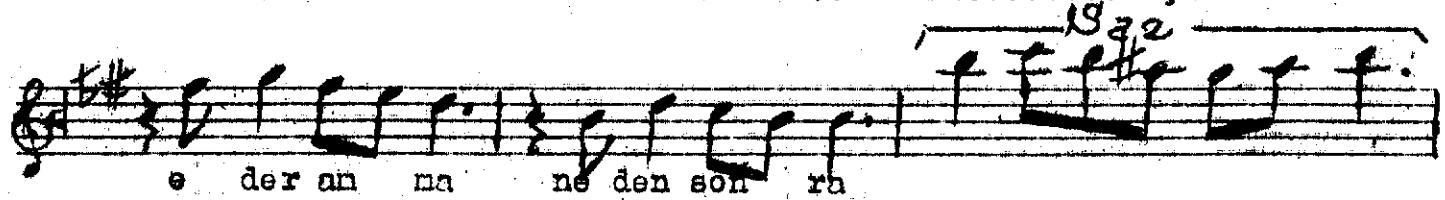
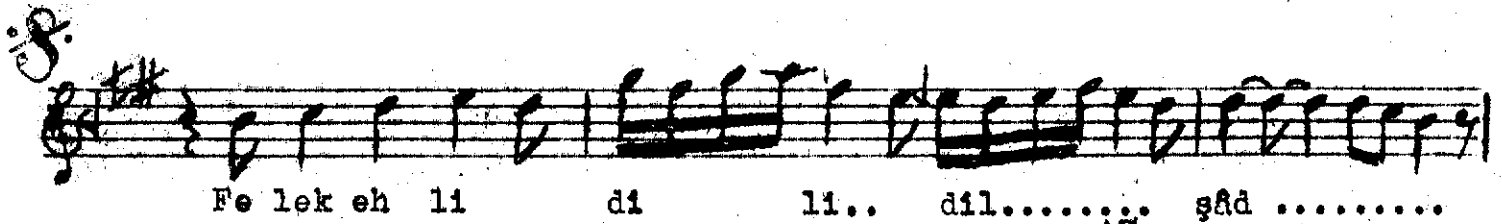
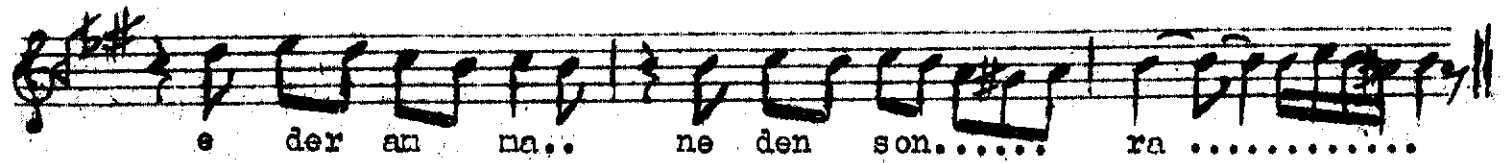
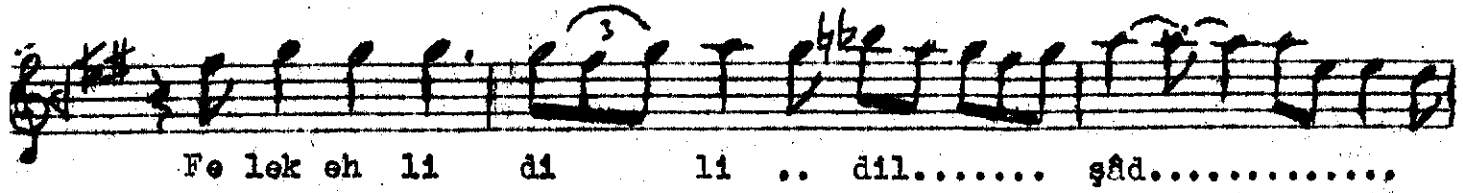
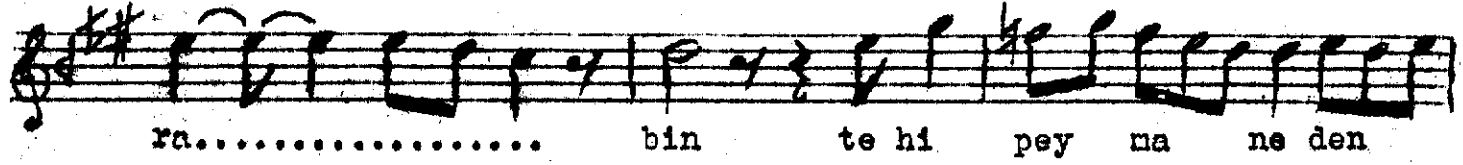
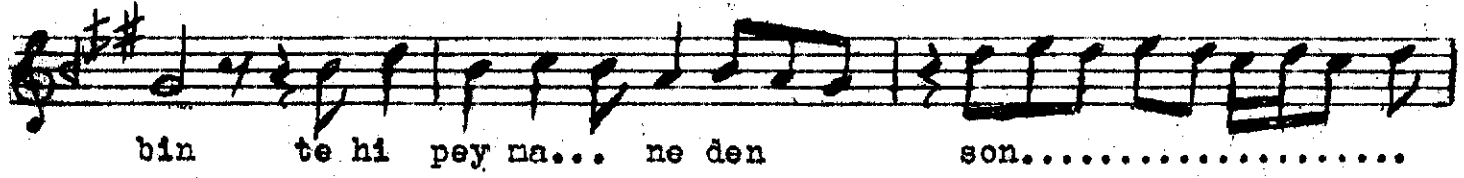


Curcuna



..... E ğer kân al.....

mak is... ter..... sen..... Me za 'ya yı...

ma hab.. bet..... ten

E ğer kâm al... mak is ter..... sen.....

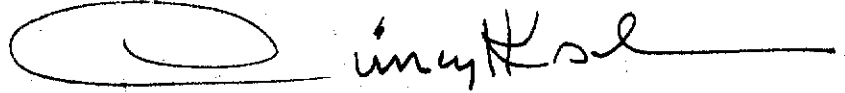
..... E ğer kân al mak is... ter.....

sen Le bi dil da ri bu.. sey..

..... le le bi pey ma

... ne den... son..... ra

Sunar bir cân-ı menlû bin tehi peymaneden sonra
 Felek ehli dil-i dilşâd eder anna neden sonra
 Mezaya-yı mahabbetten eger kâm almak istersen
 Lebi dildâr-ı buseyle lebi peymaneden sonra.

 inyKsl